

SENSORS FOR FOOD AND LIFE SCIENCES



HYGIENIC BY DESIGN

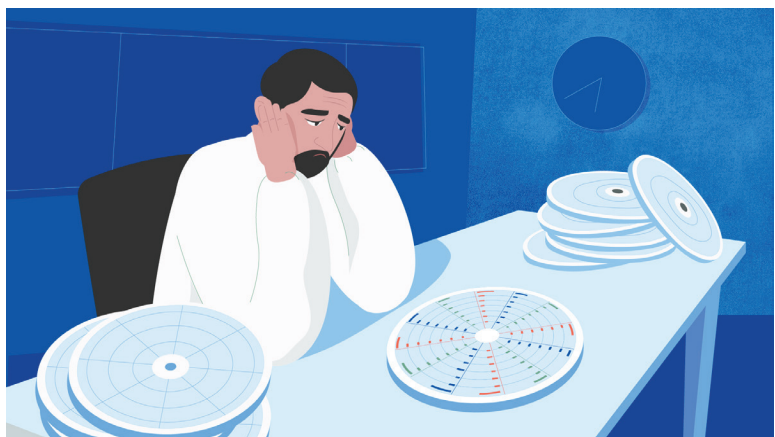
ANDERSON-NEGELE

It's so easy: **Digital Process Monitoring**
with PMO compliant PPR and Legendary™



FDA

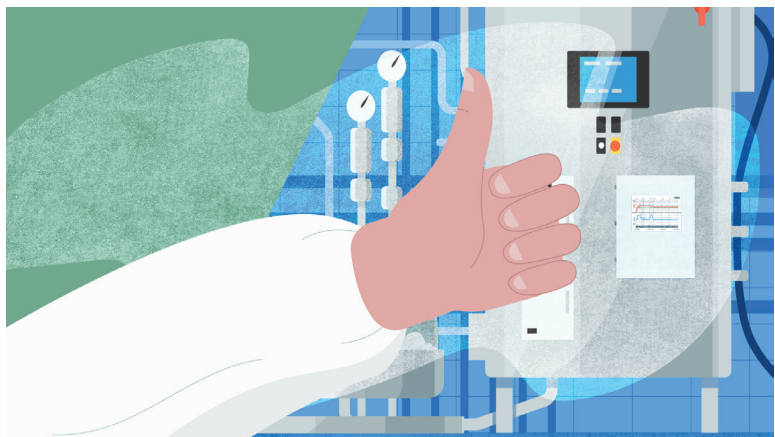
It's so easy...



...to avoid consumables cost

The fully digital PPR Paperless Process Recorder and cloud-based Legendary™ Software eliminates recurring expenses on paper charts, pens, ink cartridges, pen arms, motors and other mechanical parts.

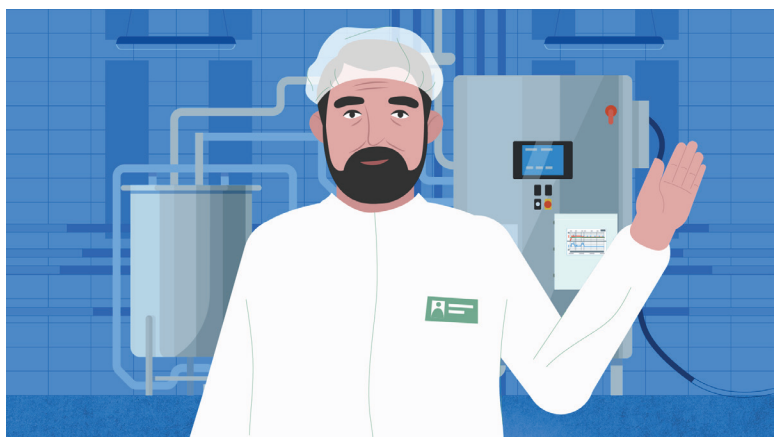
Start saving money with digital recording!



...to avoid unplanned downtimes

The digital PPR technology works without pen arms, motors and other moving parts. Plant downtime due to mechanical failures and MRO events are a thing of the past.

Grow your productivity with digital PMO control!



...to go digital and remain PMO compliant

You can easily connect all existing sensors of your application to the PPR unit. Operators can check all trendlines, add annotations, and approve them directly on PPR's touch screen display. You can also add annotations and approve records remotely from Legendary™ cloud software all while remaining PMO compliant.

Grow your productivity with digital PMO control!

PPR: Paperless Process Recorder

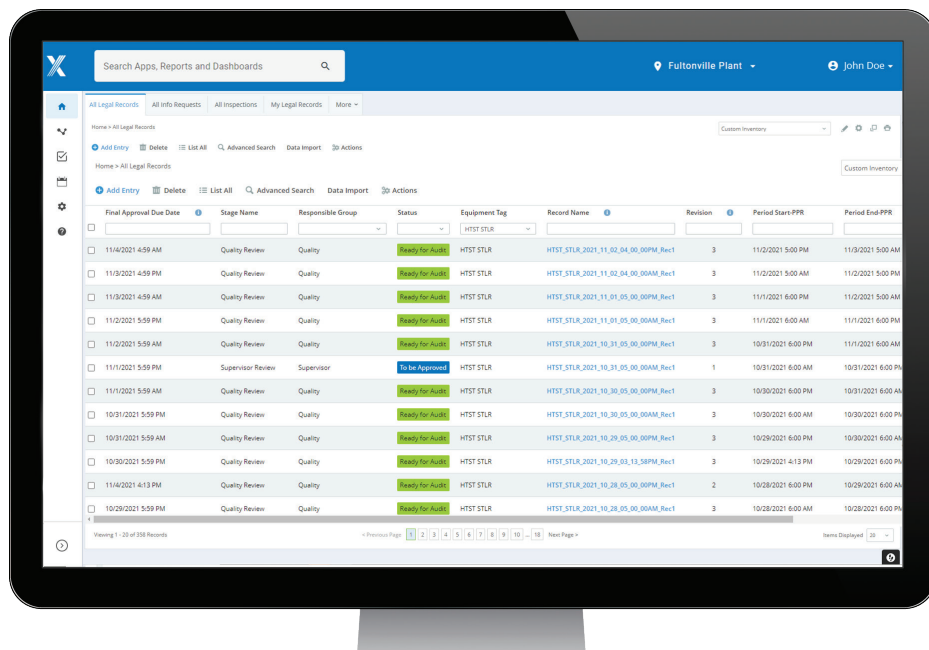


PPR is a digital recorder system

that can be used in pasteurization, CIP, COP, raw silo monitoring and in general any application that requires monitoring of process parameters like temperature, flow, pressure, level, conductivity, turbidity etc.

"The benefits of the PPR and Legendary™ solution available today are the beginning of the value we can deliver to our customers. We have a robust product roadmap and are already working on enhancements. As we partner earnestly with our customers to create innovative solutions within PPR and Legendary™, we will increase their efficiency and solve additional problems."

PPR: Paperless Process Recorder



Legendary™ is a cloud-based software

that securely stores records from all PPRs of your plant in a single location. It allows you to conveniently access, review and approve those records remotely from your office desk or home office using any web-enabled device all while meeting PMO compliance.

"Installation and set-up are very easy, and in case of questions we have FAQs, "how to" videos and a telephone hotline to assist you in every step. We are ready to partner with you in your digital transformation."



Ryan Fitzgerald, Sr. Application Engineer SaaS

It's so easy...

...to review and approve records

With Legendary™ QA can review and approve records from all PPRs of your plant remotely and have them Ready-for-Audit by state inspector. That reduces handling time and human error and makes Legendary™ an indispensable tool for quality management.

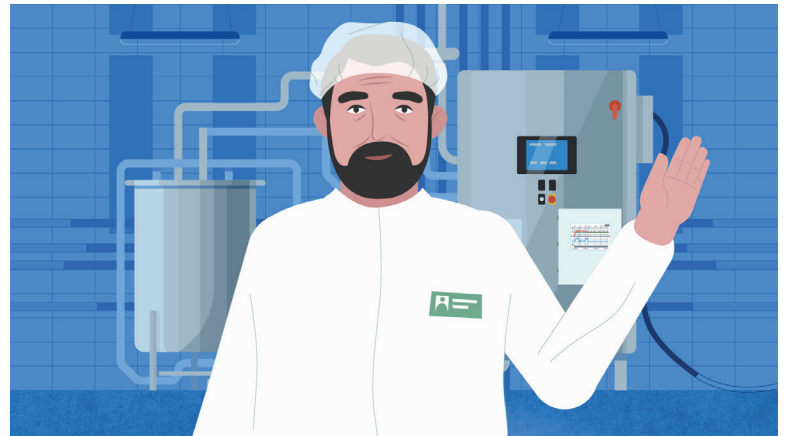
Save time in process and error handling!



...to store and retrieve records

Legendary™ securely saves all historical records and makes them available at the fingertips of the authorized users. No need to worry about charts getting wet, torn, damaged or lost while handling or storing.

Keep full control of your own data!



...to accelerate digital transformation

The PPR and Legendary™ can do more than just legal data logging. Through data evaluation, the system has potential for process optimization at the plant. Process flows can be more easily controlled, and potential errors in the processes can be detected and eliminated.

Get more efficiency into your processes!



Product code

PPR Paperless Process Recorder
NOTE: Requires Annual Legendary™ Cloud Subscription

Safety Thermal Limit Recorder (STLR)

XX None
**NOTE: STLR options below include STLR relay and two input cards for dual PT1000 RTD
 STLR options require dual PT1000 sensor like SB probe (not included see page 5)**

TD STLR with 24VDC relay
T1 STLR with 110VAC relay
T2 STLR with 220VAC relay

Safety Flow Limit Recorder (SFLR)

X None
F SFLR (only available with STLR option TD, T1, or T2; includes SFLR relay,
 one 4-20mA input card for SFLR and one additional universal input card)

Fixed

XX

Transmitter Power Supply

X None
4 4 Isolated 24VDC Supplies

**Additional Analog Inputs (Transmitter power supply not included, see spare parts)
 With STLR Option XX**

4U Four Inputs

With STLR Option TD, T1, or T2

XX None

mA Outputs/Re-Transmission

XX None
2A Two - Internally powered
4A Four - Internally powered

Additional Relay Outputs

XX None
2R Two
4R Four

Enclosure

W Wall Mount, Bottom Wiring
P Panel Mount w/Enclosure, Back Wiring

Tamper Evident Sealing Covers

X No (Only available with STLR Option XX)
S Yes

Fixed

XXXXX

PPR TD F XX X XX 4A 4R W S XXXXX

LEGENDARY™ CLOUD SOFTWARE SUBSCRIPTION

Subscription purchase order must be sent to orders@anderson-negele.com directly by the end customer along with form 10035 Legendary™ Specification Sheet. Subscription fee is per PPR.

CS-LD-36-XXXXXX 3 year subscription
 CS-LD-60-XXXXXX 5 year subscription

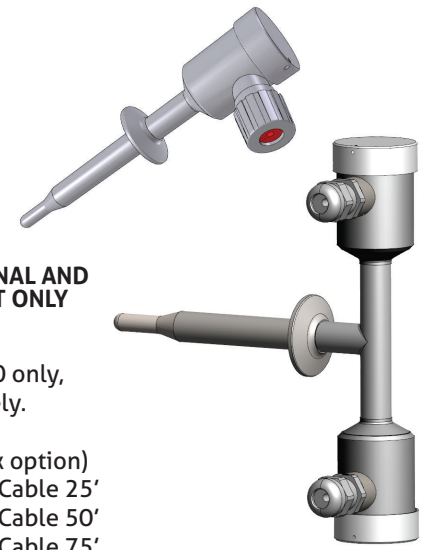
IMPLEMENTATION SERVICE

Implementation Service includes pre-configuration of PPR and Legendary™ to customer specific requirements
 CS-LD-XX-STRTUP PPR and Legendary™ Implementation Service

STLR STARTUP KIT

57219A0001 Transfer Switch Box for Series Recorder Control
 SB...PPR... Dual Head SB (See STLR Sensor Product Code on Page 5)
 CS-LD-XX-STRTUP PPR and Legendary™ Implementation Service

STLR Sensor Product Code

<p>SB- [] [] [] [] [] [] [] []</p> <p>FITTING</p> <p>004 1-1/2" Tri-Clamp 005 2" Tri-Clamp 006 2-1/2" Tri-Clamp 007 3" Tri-Clamp 008 4" Tri-Clamp 061 Split Ferrule (button) 119 3/4" Swagelok ¹ <small>¹ Not 3-A Compliant</small></p> <p>HOUSING</p> <p>1 Straight 2 Bent (for clearance 22-1/2° - split ferrule only)</p> <p>PROBE LENGTH</p> <p>025 2" (std. for 119 fitting) 081 5-1/2" (standard) 109 7-1/4"</p> <p>CABLE LENGTH</p> <p>00 No Cable 01 25' 02 50' 03 75' 04 100'</p>	<p>PPR [] []</p> <p>M RTD for SECOND HEAD L Dual PT1000 RTD² Dual PT100 RTD²</p> <p>DUAL HEAD SB</p> <p>--- LAST 4 CHARACTERS ARE OPTIONAL AND USED FOR PPR STLR STARTUP KIT ONLY</p> <p>² Available with Housing Option 1 only Available with Cable Length option 00 only, cables need to be purchased separately.</p> <p>SB Cables: (2X required for PPR matrix option) 42035C0005 - 6 Conductor Shielded Cable 25' 42035C0010 - 6 Conductor Shielded Cable 50' 42035C0015 - 6 Conductor Shielded Cable 75' 42035C0020 - 6 Conductor Shielded Cable 100'</p>	
--	--	---

Spare Parts - Electrical

57209A0002	Motherboard (No transmitter power supply) w/ PCB screws, non-STLR
57238A0001	Motherboard (No transmitter power supply) w/ PCB screws, STLR
46835A0001	Universal Input Card (1 mA/Pt100 RTD/V input)
46836A0001	mA Output Card (2 mA outputs)
57211A0002	Relay Output Card, 2 Relays kit, Non-STLR
57248A0001	Relay Output Card, 2 Relays kit, STLR
57211A0001	Relay Output Card, 4 Relays kit, Non-STLR
57247A0001	Relay Output Card, 4 Relays kit, STLR
57210A0001	SOM Main Board kit, Non-STLR
57246A0001	SOM Main Board kit, STLR
42064B0003	3V Coin Cell Battery
57204A0002	LVDS Cable for Touchscreen Display
46840A0001	USB Cable for Touchscreen Display
46841A0001	32 GB MicroSD Memory card
57221A0001	24VDC Transmitter Power Supply kit (4X Isolated Supply), Non-SLTR
57241A0001	24VDC Transmitter Power Supply kit (4X Isolated Supply), STLR
57243A0001	STLR Relay Board kit, 220VAC
57243A0002	STLR Relay Board kit, 110VAC
57243A0003	STLR Relay Board kit, 24VDC
46837A0001	STLR Input Card (Pt1000 RTD)
57249A0001	SFLR Relay Output Card kit

Note: Kits are sold with all required hardware for assembly

Spare Parts - Mechanical

57202A0001	Enclosure with display, panel mount, wiring from back, Non-STLR
57202A0002	Enclosure with display, wall mount, wiring from bottom, Non-SLTR
57202A0003	Enclosure with display, panel mount, wiring from back, STLR
57202A0004	Enclosure with display, wall mount, wiring from bottom, STLR
57207A0001	Touchscreen display assembled in PPR Door
44390A0001	Rubber Grommets (Up to 6 required per PPR)
57216A0001	Panel mount bracket hardware kit without gasket
57216A0002	Wall mount bracket hardware kit
46825A0001	Panel mount enclosure gasket
57227A0001	Input Card Sealing Cover Kit, Non-SLTR
57240A0001	Input Card Sealing Cover Kit, STLR
57233A0001	4 Channel Relay Sealing Cover kit (Non STLR/SFLR)
57234A0001	Programming Jumper Cover kit for Non-STLR/SFLR w/o 4 CH Relay
57239A0001	STLR/SFLR Card Sealing Cover Kit
46849A0001	Touchscreen Display Screen Protector Kit
57245A0001	Kit of 5 strain relief boards

Note: Kits are sold with all required hardware for assembly

It's so easy...

...to get support

PPR and Legendary™ is the next generation process recording technology. We understand that a new technology can sometimes create uncertainty, resistance from staff, and raise questions. We have created a comprehensive support toolbox to assist you in each step of decision making and system introduction, and, once installed, to make sure your PPR and Legendary™ run smoothly to provide you maximum benefits.

Visit our PPR & Legendary™ Quick Start Page

With technical documents, videos, checklists, guides...

- Before you buy: Detailed guidelines for the planning process
- Before you install: Detailed startup guides and support
- Installation: How-to videos and manuals



Click or scan for more information

If you still have questions, contact us!

- Email: info@anderson-negele.com
- Phone: 800-833-0081

or visit our website at

ANDERSON-NEGELE.COM

