

SENSORS FOR FOOD AND LIFE SCIENCES



HYGIENIC BY DESIGN

ANDERSON-NEGELE

It's so easy: **Digital Process Monitoring**
with PMO compliant PPR and Legendary™



FDA

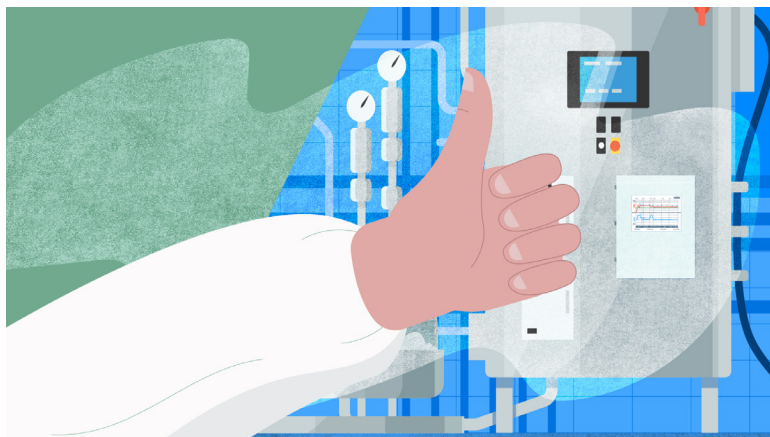
It's so easy...



...to avoid consumables cost

The fully digital PPR Paperless Process Recorder and cloud-based Legendary™ Software eliminates recurring expenses on paper charts, pens, ink cartridges, pen arms, motors and other mechanical parts.

Start saving money with digital recording!



...to avoid unplanned downtimes

The digital PPR technology works without pen arms, motors and other moving parts. Plant downtime due to mechanical failures and MRO events are a thing of the past.

Grow your productivity with digital PMO control!



...to go digital and remain PMO compliant

You can easily connect all existing sensors of your application to the PPR unit. Operators can check all trendlines, add annotations, and approve them directly on PPR's touch screen display. You can also add annotations and approve records remotely from Legendary™ cloud software all while remaining PMO compliant.

Grow your productivity with digital PMO control!

PPR: Paperless Process Recorder



PPR is a digital recorder system

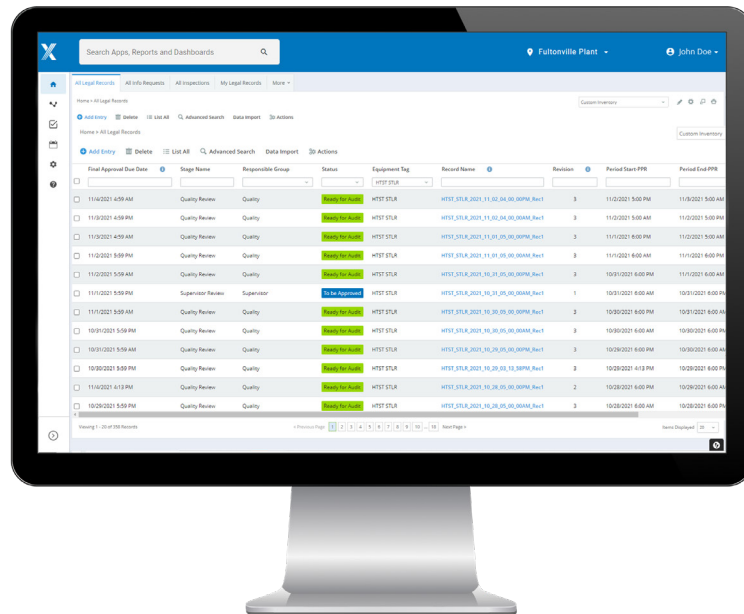
that can be used in pasteurization, CIP, COP, raw silo monitoring and in general any application that requires monitoring of process parameters like temperature, flow, pressure, level, conductivity, turbidity etc.

"The benefits of the PPR and Legendary™ solution available today are the beginning of the value we can deliver to our customers. We have a robust product roadmap and are already working on enhancements. As we partner earnestly with our customers to create innovative solutions within PPR and Legendary™, we will increase their efficiency and solve additional problems."



Ashish Maharjan, SaaS Vertical Manager

PPR: Paperless Process Recorder



Legendary™ is a cloud-based software

that securely stores records from all PPRs of your plant in a single location. It allows you to conveniently access, review and approve those records remotely from your office desk or home office using any web-enabled device all while meeting PMO compliance.

"Installation and set-up are very easy, and in case of questions we have FAQs, "how to" videos and a telephone hotline to assist you in every step. We are ready to partner with you in your digital transformation."



Ryan Fitzgerald, Sr. Application Engineer SaaS

It's so easy...

...to review and approve records

With Legendary™ QA can review and approve records from all PPRs of your plant remotely and have them Ready-for-Audit by state inspector. That reduces handling time and human error and makes Legendary™ an indispensable tool for quality management.

Save time in process and error handling!



...to store and retrieve records

Legendary™ securely saves all historical records and makes them available at the fingertips of the authorized users. No need to worry about charts getting wet, torn, damaged or lost while handling or storing.

Keep full control of your own data!



...to accelerate digital transformation

The PPR and Legendary™ can do more than just legal data logging. Through data evaluation, the system has potential for process optimization at the plant. Process flows can be more easily controlled, and potential errors in the processes can be detected and eliminated.

Get more efficiency into your processes!



It's so easy...

...to get support

PPR and Legendary™ is the next generation process recording technology. We understand that a new technology can sometimes create uncertainty, resistance from staff, and raise questions. We have created a comprehensive support toolbox to assist you in each step of decision making and system introduction, and, once installed, to make sure your PPR and Legendary™ run smoothly to provide you maximum benefits.

Visit our PPR & Legendary™ Quick Start Page

With technical documents, videos, checklists, guides...

- Before you buy: Detailed guidelines for the planning process
- Before you install: Detailed startup guides and support
- Installation: How-to videos and manuals



Click or scan for more information

If you still have questions, contact us!

- Email: info@anderson-negele.com
- Phone: 800-833-0081

or visit our website at

ANDERSON-NEGELE.COM

